



INTERLOCKING TUBE CLAMPS

STOP

- VIBRATION
- SHOCK
- HYDRAULIC HAMMER

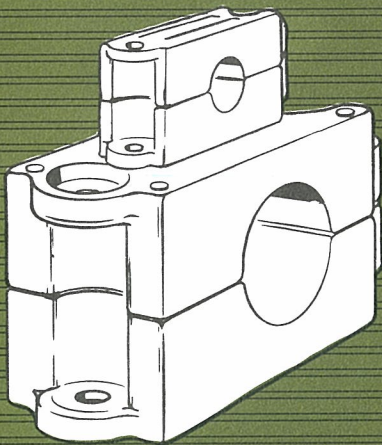
ANCHORS TUBE AND PIPE IN SINGULAR OR MULTIPLE ROWS IN SIZES FROM 1/4 INCH TUBE TO 2 INCH PIPE.

Girard development inc.

P. O. BOX 338 RANCHO CORDOVA, CALIFORNIA 95741

Phone 916 635-8159

APPLICATIONS



HYDRAULIC

Servo — Control Power Transmission

- Heavy Transportation Equipment
- Construction Machinery & Equipment
- Machine Tools
- Farm Machinery
- Materials Handling Equipment

PNEUMATIC

Control — Instrumentation Transport Equipment

- Industrial Process Control Systems
- Plant Compressed Air Systems

- Compressors
- Control Consoles
- Visual Gage Panels

MISCELLANEOUS

- Liquid & Gaseous Systems
- Pumping Rigs
- Process Piping
- Automatic Lubrication Systems
- Coolant Systems
- High Pressure Gas Storage Systems
- Cryogenic Systems
- Laboratory; R & D
- Test Setups
- Small Component Mounting

Interlocking Tube Clamps provide a uniform means of securing high pressure tubing in all sizes at low cost. The unique Interlocking feature, while being the key to standardization, also provides great structural integrity by tying a group of clamps into a homogeneous unit. Even when used singly, the husky design of the clamp allows tightening of the $\frac{1}{4}$ " fastening bolt to failure with neither rupture nor distortion of the clamp.

The tubes are firmly held in place by the gripping action of the elliptical hole, which allows only elastic deflection of the tube. No amount of overtightening can damage the tube. This is in direct contrast to the ordinary split block clamp, which often crimps the tube at the point of containment and causes serious stress concentrations.

Each series, being identical in shape except for the tube gripping recess, allows standardization of piping runs throughout a plant even in offhand installations. This simplifies the task of specifying tubing runs all the way from engineering to the maintenance department, and provides uniformity throughout the plant which results in a significant saving.

Copyright 1965 by Girard Development, Inc.

The contents of this brochure are for the use only of the initial recipient. Reproductions or transfer of any of the contents is prohibited except with the written permission of Girard Development, Inc.

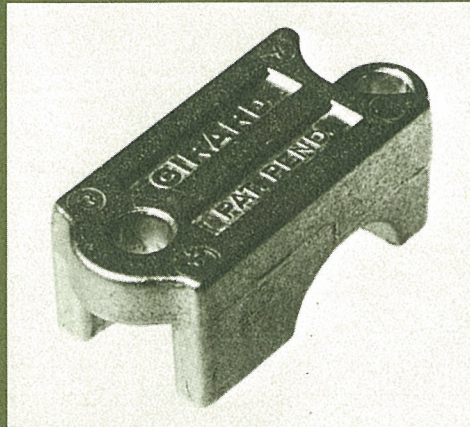
The tube clamps disclosed herein are protected by U.S. Patent No. 3,180,598 and 3,216,683. Unauthorized manufacturers, users or sellers of the patented clamp will be prosecuted as infringers.

Patents: U.S. and Foreign issued and pending.

FEATURES

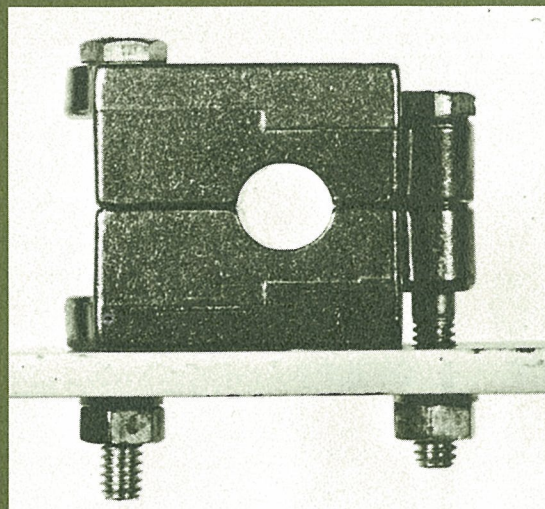
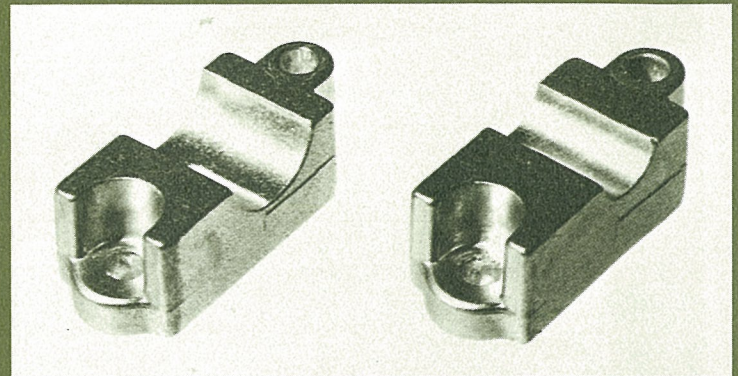
- Low Cost
- Quick & Easy Installation
- Elliptically Shaped Hole Holds Tube Firmly Without Crimping Tube.
- Multiple Tube Installation Side by Side or Stacked.
- Allows Quick Change of Individual Clamps to Accommodate A Change in Tube Size.
- Spaces Tubes Closely But with Union Clearance.
- Constant Pitch Bolt Holes Allows Pre-Drilling of Mounting Structure.
- Tube Cannot Be Damaged By Overtorquing Of Holdown Bolts.
- Provides Neat Appearance of Multiple Tubing Runs.
- Eliminates Hydraulic Hammer.

HOW THEY WORK



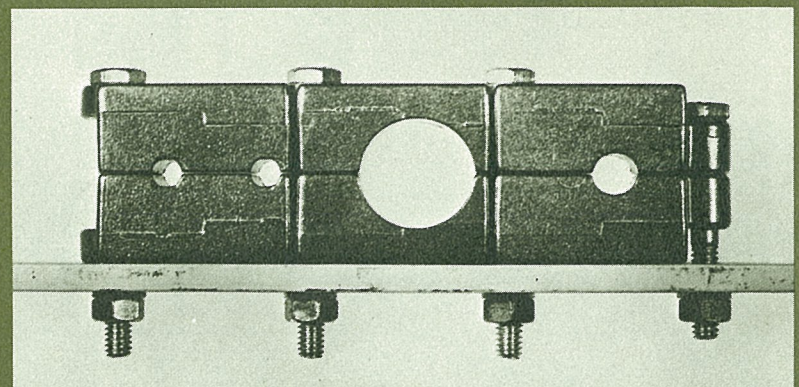
1
THE BASIC BUILDING BLOCK OF INTER-LOCKING TUBE CLAMPS IS AN ALUMINUM DIE CASTING.

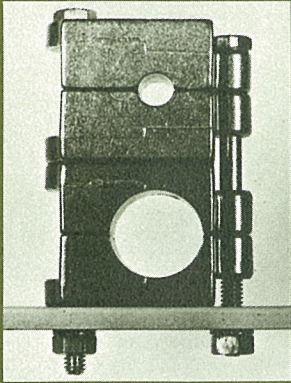
2
IT HAS A SOCKET ON ONE END, A LUG ON THE OTHER, AND A SEMI-CIRCULAR RECESS IN ONE FACE. THE RECESSES VARY IN SIZE ACCORDING TO WHAT SIZE TUBE IS TO BE CLAMPED.



3
A SINGLE CLAMP IS COMPRISED OF TWO IDENTICAL BLOCKS, HELD TOGETHER, AND ONTO A SUPPORTING STRUCTURE BY TWO THRU BOLTS.

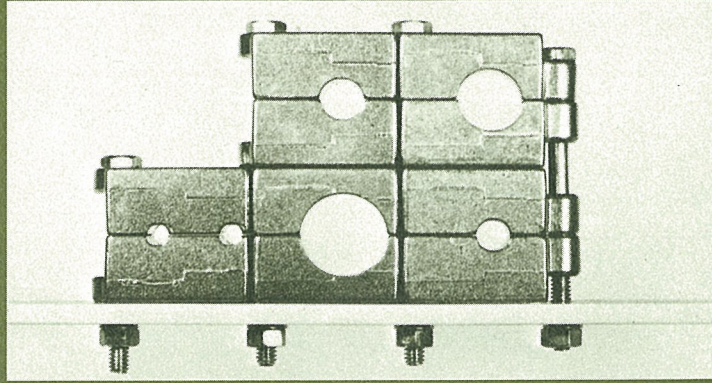
4
THEY CAN BE EXTENDED END TO END, TONGUE AND GROOVE FASHION,





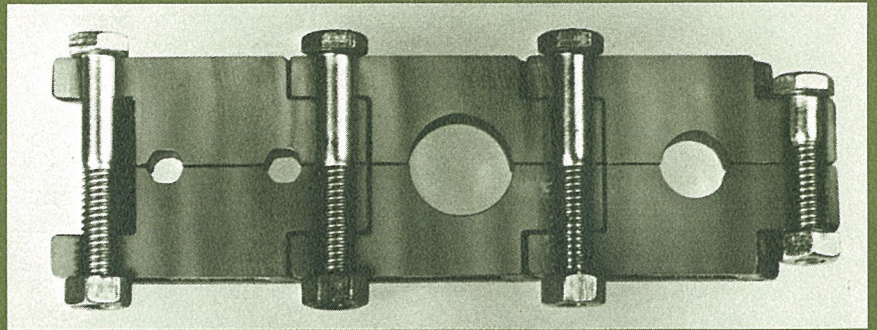
5 OR STACKED

BECAUSE OF THE WAY ADJACENT CLAMPS IN AN EXTENDED SERIES SHARE ONE BOLT, THE ENTIRE SERIES IS AN INTEGRAL STRUCTURE WHETHER OR NOT THE BOLTS ARE FASTENED THRU A SUPPORT, SO THAT ON LONG SPANS, THE TUBES CAN SUPPORT EACH OTHER.

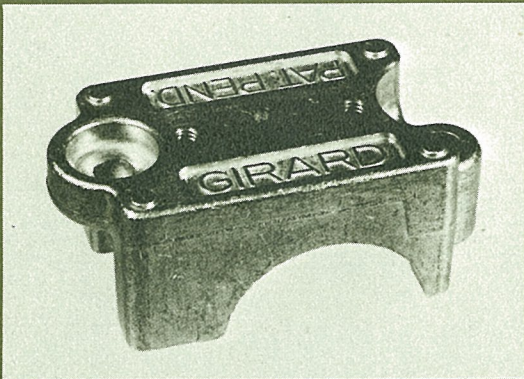


OR BOTH

7



6 SO THAT RUNS OF MULTIPLE TUBES CAN BE HELD TOGETHER IN A NEAT BUNDLE, WITHOUT REGARD TO SIZE VARIANCE WITHIN THE BUNDLE.

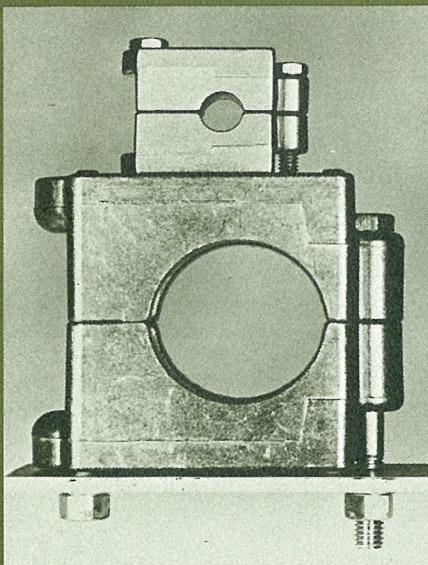


THE SMALLEST OF THE BASIC BLOCKS ARE CALLED THE 100 AND 150 SERIES. THEY WILL CLAMP TUBE FROM 1/4" TO 1" AND PIPE FROM 1/8" TO 1/2".

8

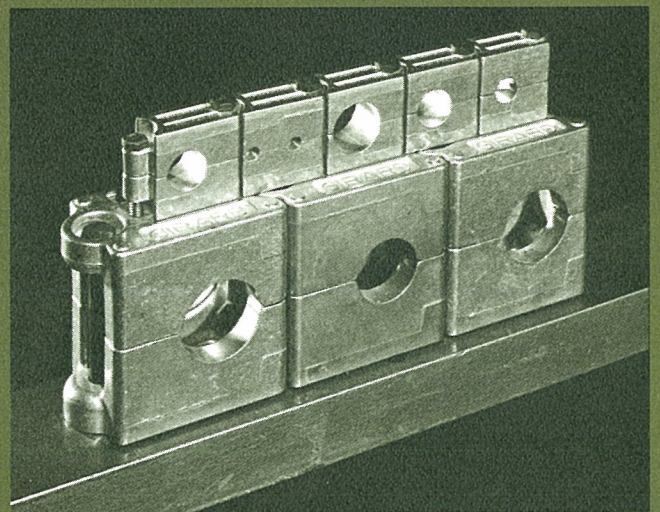
THE NEXT SERIES LARGER, IS CALLED THE 200 AND 250 SERIES, AND CLAMPS TUBE FROM 1" TO 2" AND PIPE FROM 3/4" TO 2". THEY ARE TWICE THE PITCH OF THE 100 SERIES AND HAVE TAPPED HOLES IN THEM SO THAT THE 100 SERIES CAN BE BOLTED DIRECTLY ON TOP OF THEM,

9 SINGULARLY,

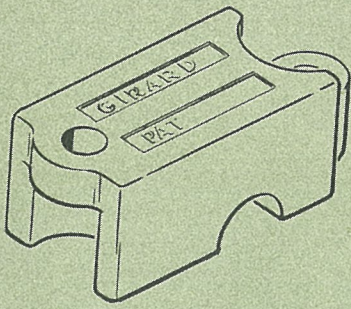


OR IN EXTENDED SERIES. **10**

THEY GRIP THE TUBE TIGHTLY AND ELIMINATE LOOSE FITTINGS, LEAKAGE AND SYSTEM FAILURE DUE TO VIBRATION, SHOCK AND HYDRAULIC HAMMER

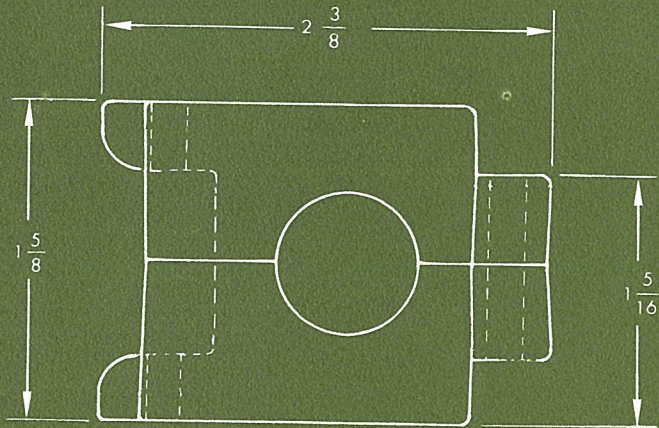
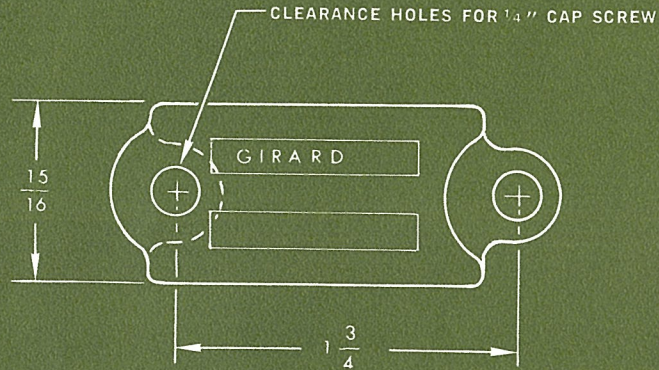


AND THERE YOU HAVE IT.



DIMENSIONS
100 AND 150 Series
CLAMPS TUBE FROM 1/4" TO 1"
PIPE FROM 1/8" TO 1/2"

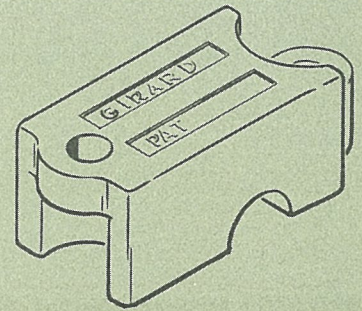
ORDERING: ALL ORDERS SHOULD SPECIFY PART NUMBERS.



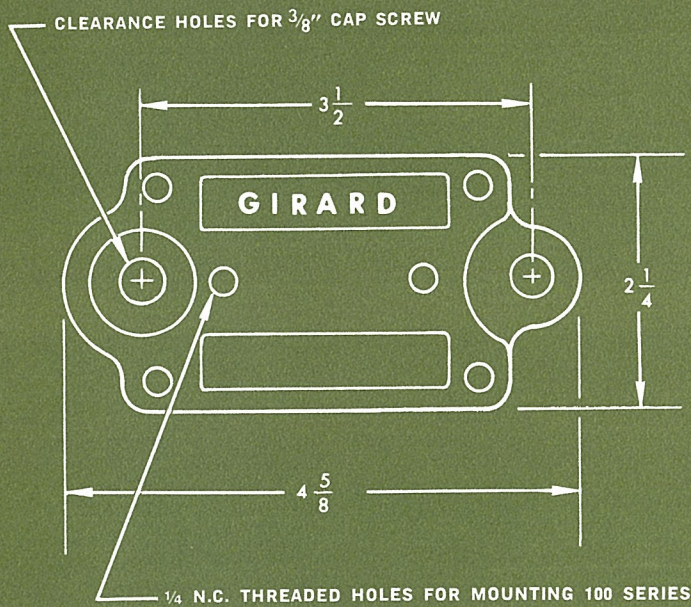
PART NO.	FITS NOMINAL SIZE
1/4 TUBE - 100	CLAMPS 1/4" TUBE
3/8 TUBE - 100	CLAMPS 3/8" TUBE
1/2 TUBE - 100	CLAMPS 1/2" TUBE
9/16 TUBE - 100	CLAMPS 9/16 TUBE
5/8" TUBE - 100	CLAMPS 5/8" TUBE
3/4 TUBE - 100	CLAMPS 3/4" TUBE
1 TUBE - 100	CLAMPS 1" TUBE
1/4 PIPE - 150	CLAMPS 1/4" PIPE
3/8 PIPE - 150	CLAMPS 3/8" PIPE
1/2 PIPE - 150	CLAMPS 1/2" PIPE

- TUBE AND PIPE PITCH IS 1 3/4" EXCEPT 1/4" TUBE WHICH IS 7/8".
- RECOMMENDED MOUNTING HARDWARE 1/4" CADMIUM PLATED GRADE 5 HEX HEAD CAP SCREWS.
- STANDARD CLAMP IS ALUMINUM ALLOY 360 WITH BRIGHT FINISH.

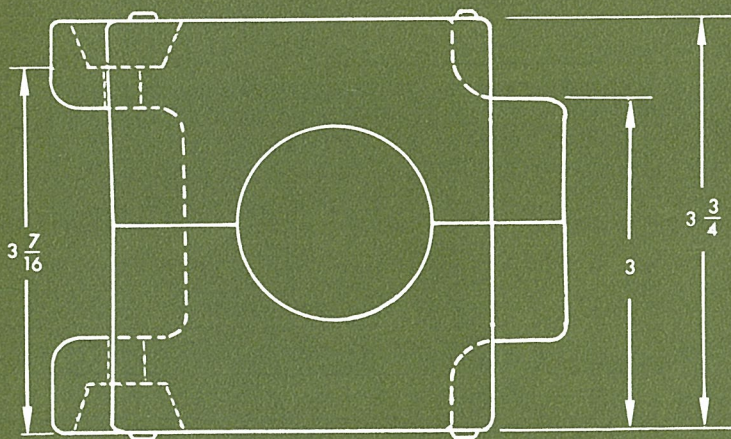
DIMENSIONS
200 and 250 Series
CLAMPS TUBE FROM 1" TO 2"
PIPE FROM 3/4" TO 2"



ORDERING: ALL ORDERS SHOULD SPECIFY PART NUMBERS.



PART NO.	FITS NOMINAL SIZE
1 TUBE - 200	CLAMPS 1" TUBE
1 1/4 TUBE - 200	CLAMPS 1 1/4" TUBE
1 1/2 TUBE - 200	CLAMPS 1 1/2" TUBE
1 3/4 TUBE - 200	CLAMPS 1 3/4" TUBE
2 TUBE - 200	CLAMPS 2" TUBE
3/4 PIPE - 250	CLAMPS 3/4" PIPE
1 PIPE - 250	CLAMPS 1" PIPE
1 1/4 PIPE - 250	CLAMPS 1 1/4" PIPE
1 1/2 PIPE - 250	CLAMPS 1 1/2" PIPE
2 PIPE - 250	CLAMPS 2" PIPE



- TUBE AND PIPE PITCH IS 3 1/2".
- RECOMMENDED MOUNTING HARDWARE 3/8" CADIUM PLATED GRADE 5 HEX HEAD CAP SCREWS.
- STANDARD CLAMPS IS ALUMINUM ALLOY 360 WITH BRIGHT FINISH.

*Dimensions Are Nominal